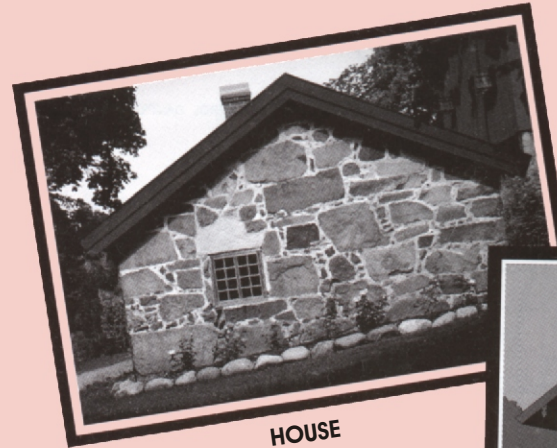
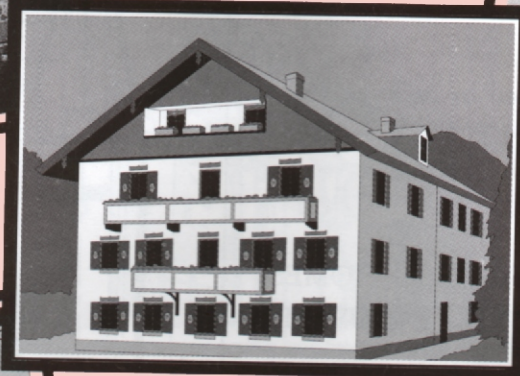


USE OUR ENERGY TO SAVE YOURS



HOUSE



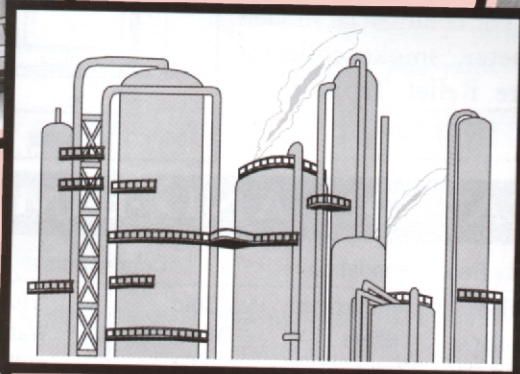
HOSTEL



GUEST HOUSE



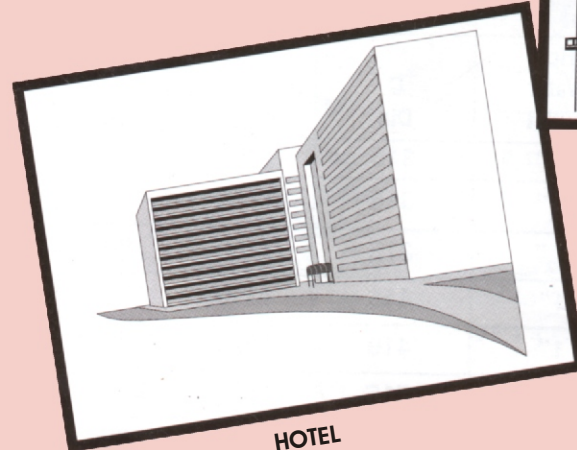
HOSPITAL



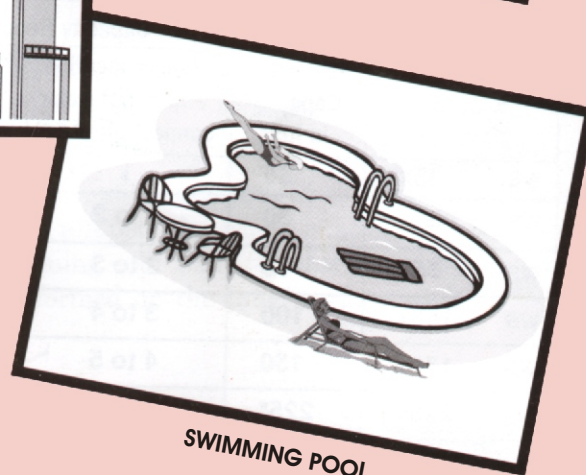
INDUSTRIES



DAIRY



HOTEL

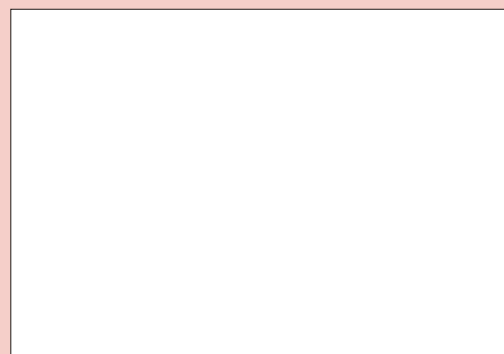


SWIMMING POOL

ONE YEAR FULL VALUE GUARANTEE

IF THE TANK SHOULD LEAK
WITHIN ONE YEAR OF INSTALLTION,
WE PROVIDE EITHER FREE REPAIRING OR
COMPLETE REPLACEMENT AT OUR OPTION.
CUSTOMER WOULD BEAR ALL THE
TRANSFER & INCIDENTAL
EXPENSES BOTH WAYS.

INDIAN PTENT NO. 145295



WARM STREAM

ANAND-SOJITRA ROAD, P.O. BOX - 22
V.U NAGAR, Gujarat 388 121. INDIA.
Tel.: (02692) 231316, 232309 • Fax: 236478
E-mail: warmstream@warmstream.co.in
Web site : www.warmstream.co.in
www.warmstream.net

EXAMINE
SELECT
DECIDE



Quality Certification
Bureau Inc.



Accredited by
the Dutch Council
for Accreditation

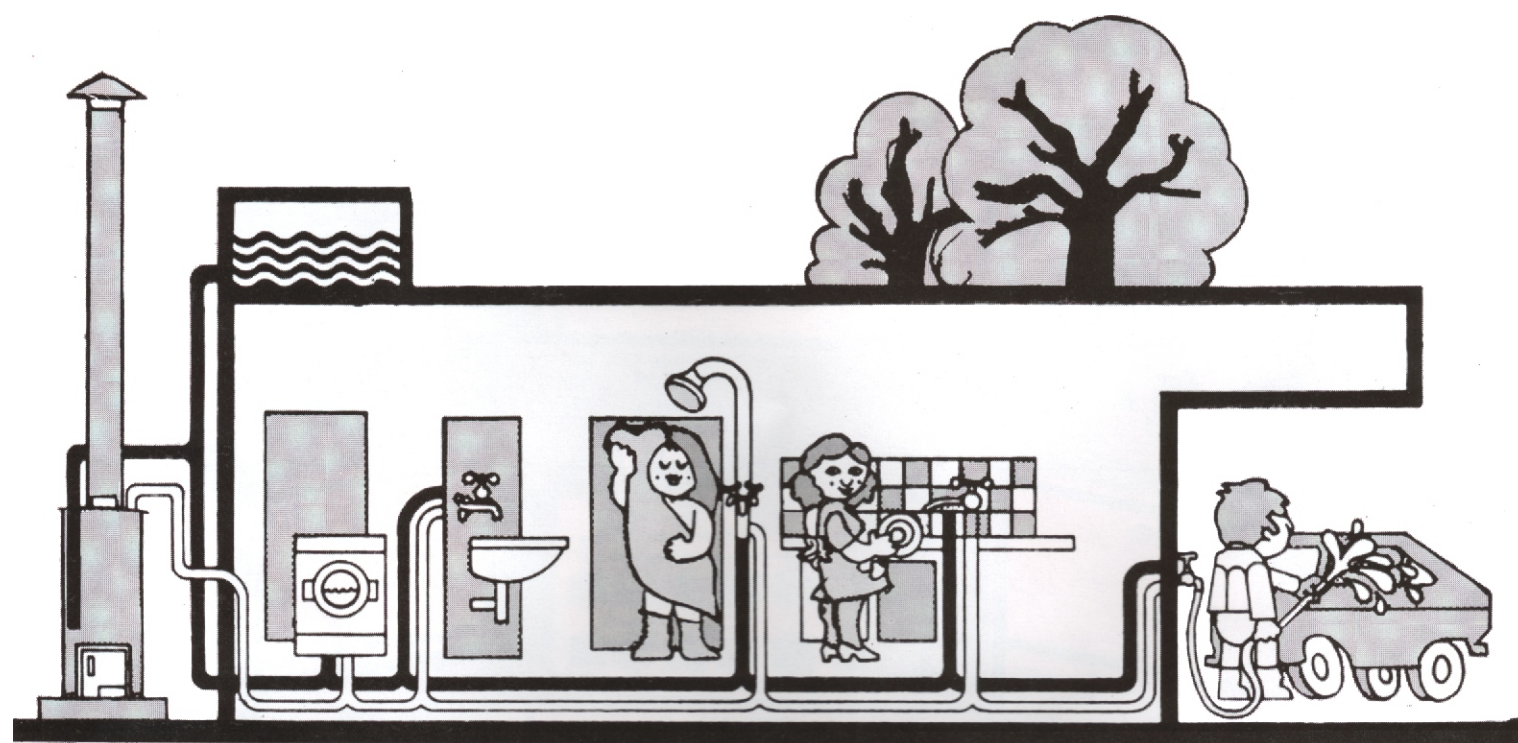
ISO 9001 : 2000 CERTIFIED.



WARM STREAM

A HOUSEHOLD NAME FOR HIGH PERFORMANCE

WATER HEATERS



SOLID FUEL FIRED STORAGE WOODEN GEYSER

It is said

"Luxury and Economy Seldom go together." but we made it possibl, in our innovative storage water Geyser **It brings warm refreshing water.** where-ever you want, whenever you want.

SOME SALIENT FEATURES

- **Improved Thermal Efficiency :** Our long experience with wood burning combined with latest technology of heat transfer has resulted in this innovative, efficient Wooden Geyser. Insulated storage tank saves the heat for you. It takes only 10 to 15 minutes to warm up from cold start.
- **Minimum Maintenance :** It has no moving part and all surfaces/parts which are coming in contact with heat are protected by water wall construction. It is fabricated from heavy gauge quality steel having robust construction.
- **CAUTION :** Water heaters are made of mild Steel and hence it can give Rusty water **if the water is acidic or has chlorine in the water and/ or is overheated.** In case of getting Rusty water, you are requested to please **ensure that it is not overheated.** and if it still persists, please get water checked, whether the water is acidic. **If so, little alkaline solution (NaOH - i.e. caustic soda) can be added** to the incoming cold water, so that water becomes little alkaline. This is required to be done initially. Once the scale is formed on the surface and heating is controlled, there would Not be problem of Rusty water.

Your Saving Chart :

BASED ON 100 LTRS. WATER FROM 15 C TO 65 C °						
Sr. No .	Fuel	Calorific value of fuel	Efficiency Considered %	Price (Rs.)	Cost to produce 100 ltrs. Warm Water (Rs.)	Total expenses per person/day average requirement 20 ltrs. Person/day (Rs.)
1.	Wood (Dry)	3900 Kcal/kg.	60 %	1-00/kg.	2.14	0.43
2.	Charcol	5500 Kcal/kg.	70 %	5.00/kg.	6049	1.30
3.	Kerosene	9110 Kcal/kg.	65 %	16.00/kg.	13.50	2.70
4.	Cooking Gas (Bottle)	11700 Kcal/kg.	75 %	17.00/kg.	10.00	2.00
5.	Electricity	860 Kcal/k.WH	95 %	4.50/k.WH	27.54	5.51

Above rates are based on market value at Vallabh Vidhyanagar as on 18-9-2001

Form No . 138 4 x 1¼ 10,000 dt. 15-12-2002

Fuel :

It works on inexpensive fuel like firewood, chrcoal, agricultural, domestic and garden waste. It works as incinerator and solves your waste disposal problem.

Safety :

It uses no electricity. No worries about power cut and Electric shock.
All Geysers are individually hydraulic pressure tested.

Installation :

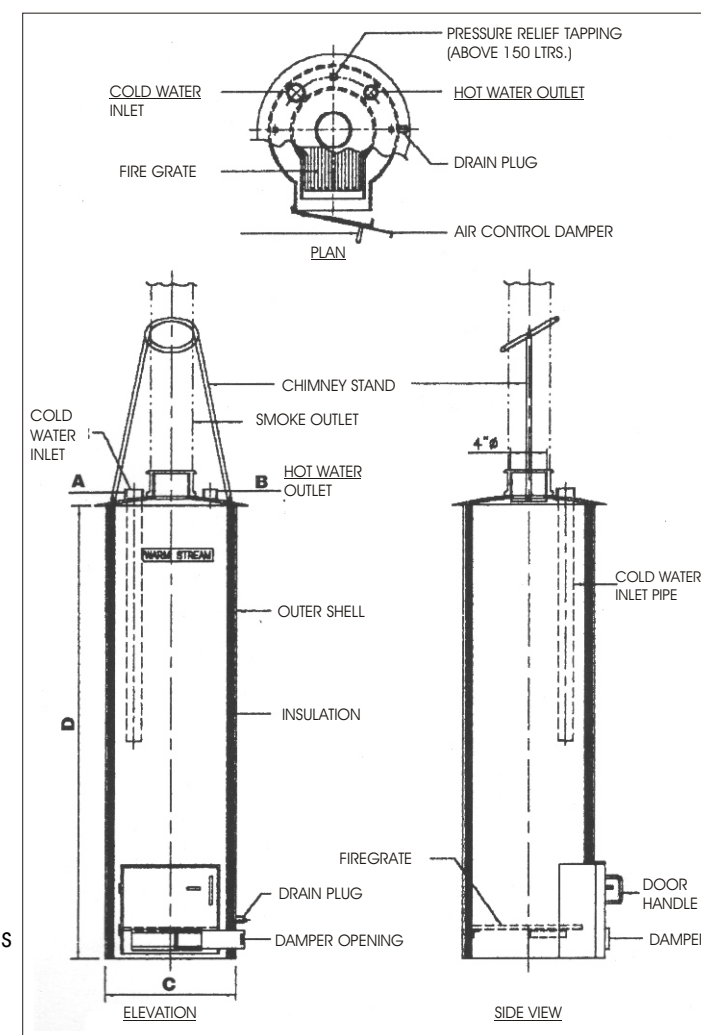
Our Geysers are generally installed in backyards or in the corner. It stays out and keeps your place clean. It does not require costly foundation.

Users :

Our storage Wooden Geysers are useful for **HOMES, HOSTELS, HOSPITALS, INDUSTRIES, SWIMMING POOLS, DAIRIES** etc.

Accessories :

Our Geysers are supplied with chimney stand, chimney cover, ash cleaning rod, fire wood feeding rod and fire grate, as the standard accessories. *For commercial models (225Y & above) dial thermometer, smoke collector (Height: 220 MM) and pressure Relief Tapping are provided.



SPECIFICATION AND DIMENSIONS

Model	Volumetric Capacity in ltrs.	Capacity Recommendation		Connection		In MM		Weight kgs.
		Recommended No . Of hot water connection of 1/2"	No . Of maxium users (Persons)	Cold Water Inlet	Hot Water Outlet	C Dia	D Hight	
WS 35 x	35	1	1 to 4	1"	1/2"	315	1080	70
WS 50 x	50	1 to 2	5 to 7	1"	1/2"	315	1250	82
WS 75 x	75	2 to 3	8 to 10	1"	1/2"	315	1680	98
WS 100 x	100	3 to 4	11 to 15	1"	1"	415	1350	120
WS 150 Y	150	4 to 5	15 to 25	1"	1"	410	1920	145
WS 225 Y	225*	6 to 10	26 to 100	2"	2"	515	1800	230
WSI 300 Z	300*	11 to 15	101 to 150	2"	2"	530	2130	260
WSI 500 Z	500*	16 to 30	151 to 250	2"	2"	670	2170	330
WSI 700 Z	700*	31 to 50	251 to 500	2"	2"	780	2170	425
WSI 1000 Z	1000*	51 to 80	501 to 600	2"	2"	950	2170	600
WSI 1500 Z	1500*	81 to 120	601 to 800	3"	3"	1325	2425	940
WSI 2000 Z	2000*	121 to 150	801 to 1000	3"	3"	1400	2625	1000

SOLAR WATER HEATER : We offer 125 ltrs. To 500 Domestic Water Heaters and higher capacity for commercial and industrial applications.

GAS FIRED WATER HEATER : We offer fully automatic Gas Fired Water Heater IN 50, 100, 150, 300, 500, 700, & 1000 ltrs.

OIL FIRED WATER HEATER : Manual & Automatic in above capacities & Bigger.

Due to constant improvements in design, we may change the dimensions without intimation.